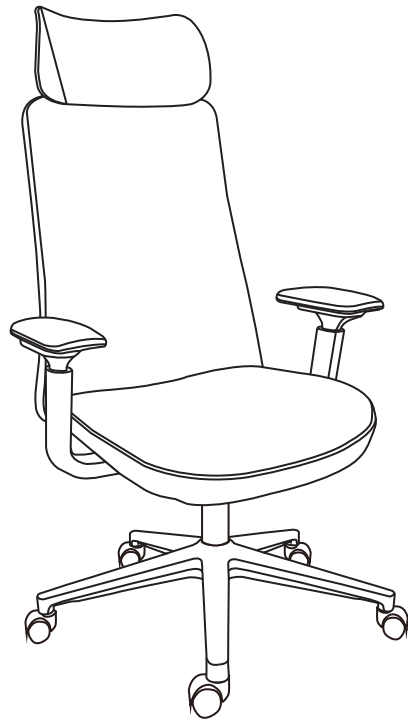


workflow

cadeira de escritório alta

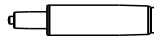
TOK&STOK



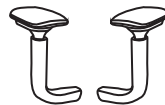
partes do produto



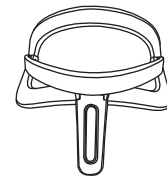
1 Rodízio (5x)



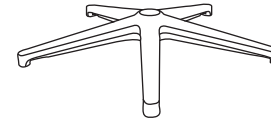
3 Pistão (1x)



5 Braços (2x)



7 Encosto de cabeça (1x)



2 Base (1x)



4 Assento (1x)



6 Encosto (1x)

componentes



A- Parafuso M8x25 (3x)



B- Arruela de pressão M8 (5x)



C- Arruela M8x16x1.5mm (5x)



D- Parafuso M8x70 (2x)



E- Chave Allen M4 (1x)



F- Chave Allen M5 (1x)



1
pessoas necessárias
para montar
o produto



médio

grau de
dificuldade



Não utilizar
produtos químicos
ou abrasivos na
limpeza.



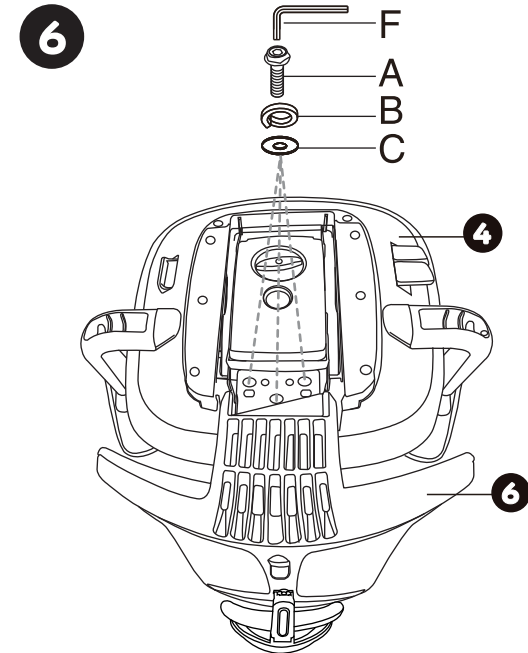
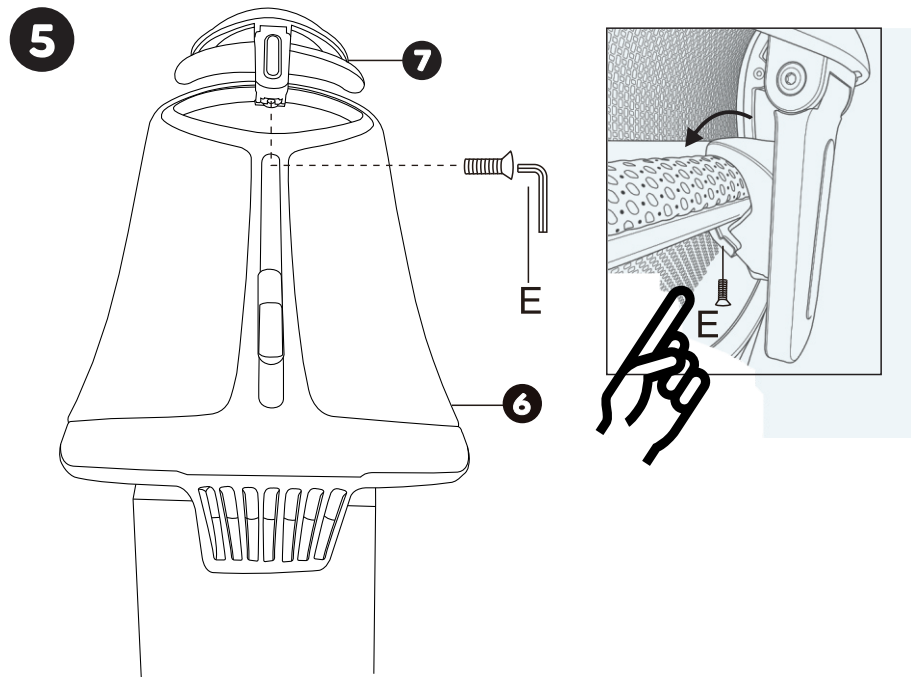
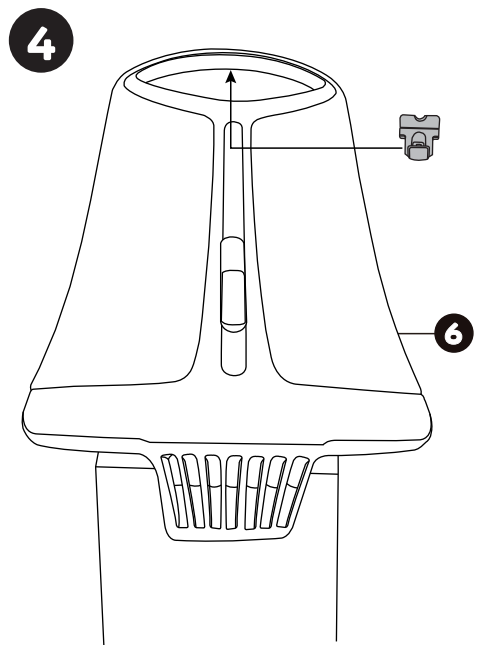
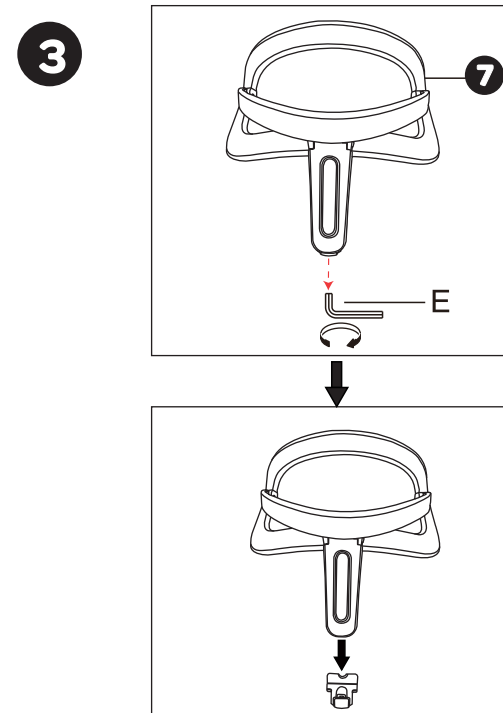
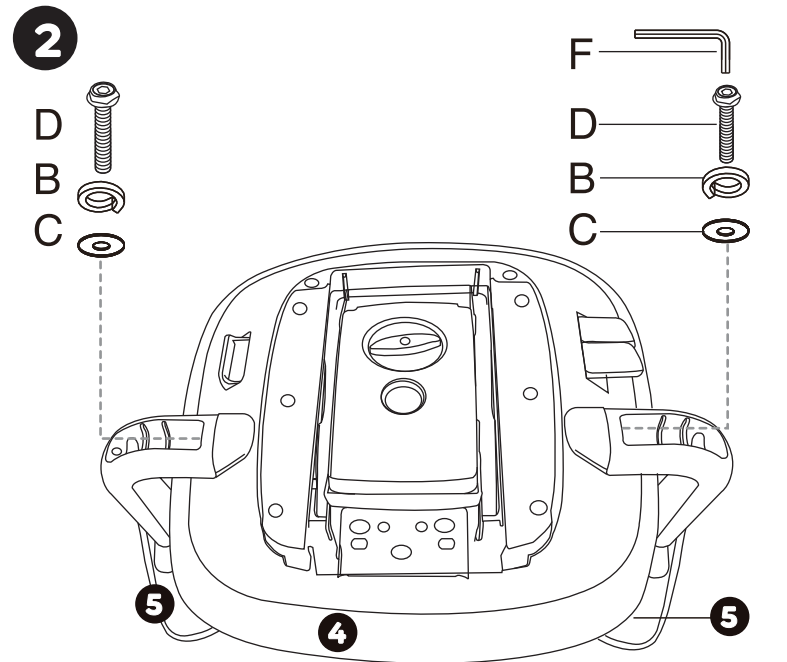
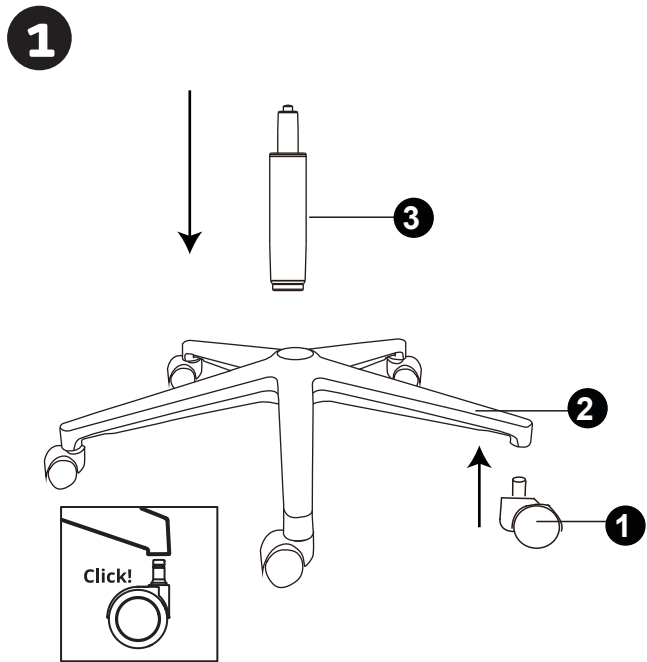
Evitar batidas e o
contato com objetos
cortantes.



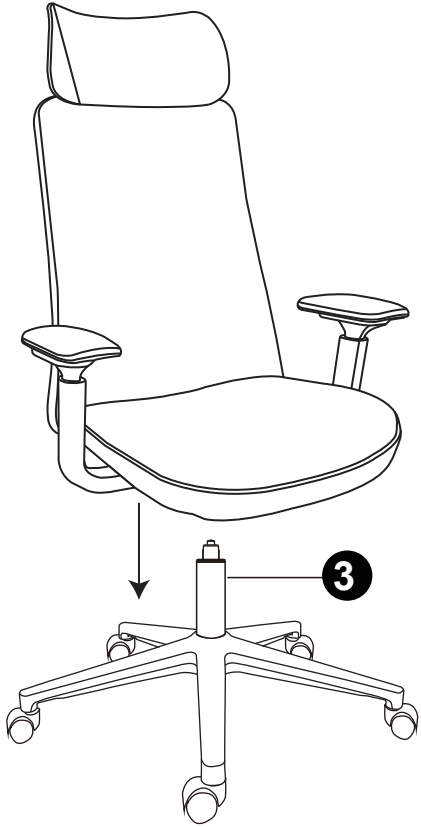
Base e braços: pano
levemente umedecido com
água, seguido de pano seco.
Assento/encosto: escova com
cerdas macias.



120
Kg
capacidade máxima
suportável, distribuída
uniformemente

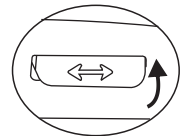
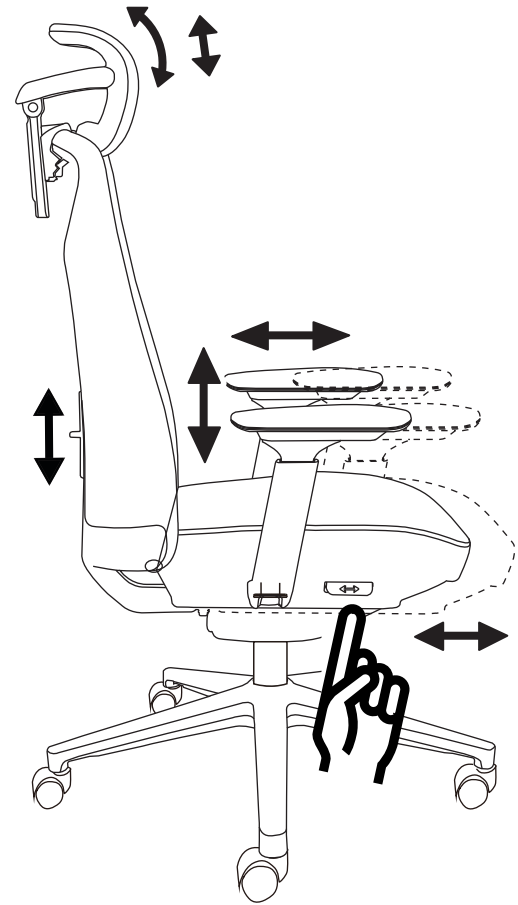


7



8

Regulagens



assento para frente/ para trás



1º botão regulagem de altura do assento

2º botão regulagem de relax (trava e destrava)

